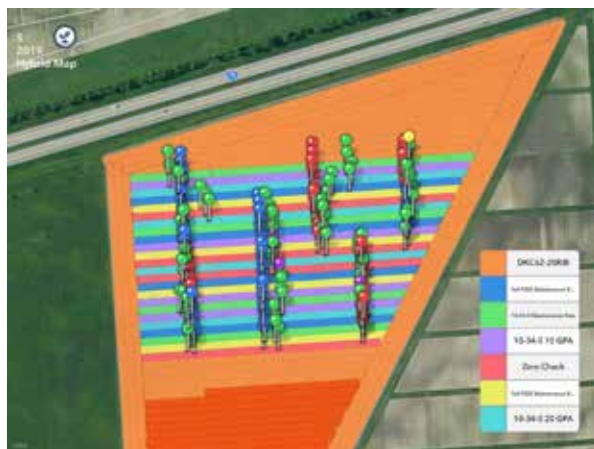


INTRODUCTION TO PRECISION AGRICULTURE

Introduction to the principles and technologies of precision agriculture including: Global Positioning System (GPS), guidance systems, plant and soil sensors, soil sampling, yield mapping and related technologies. Precision agriculture or site-specific crop management is a technological development in production agricultural management. This course provides an overview of the principles of precision agriculture with focus on prescriptive agriculture and the ability to effectively execute input management plans using today's technologies.



Course Details

*Offered Autumn semesters
2 Credit Hours*



More Info...

*Contact Dr. John Fulton for
more information:
fulton.20@osu.edu*



Prerequisites

*Sophomore standing or
permission of instructor*



*See all Ohio State
Digital Ag course
offerings*