

Welcome to Planter University

#PlanterU
#plant17



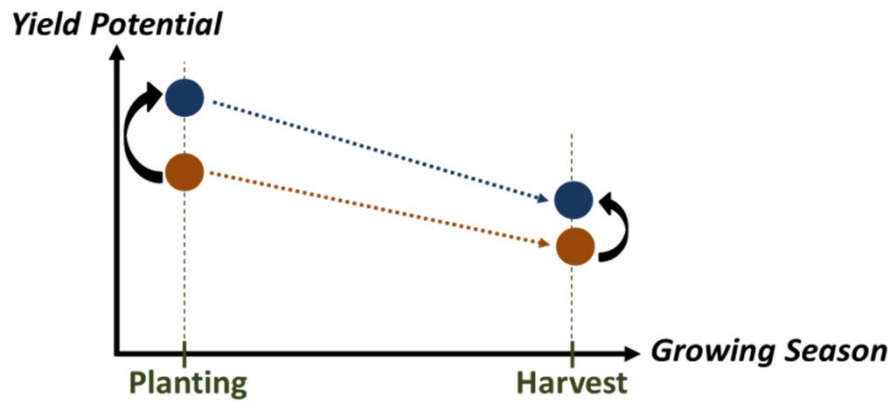
Ability of the planter to:

- Reach target **seeding rate**.
- Obtain **uniform seed spacing**.
- **Achieve adequate and uniform planting depth without compaction**
 - supports immediate germination and uniform emergence.



Question: Can you **EFFECTIVELY** control each of these variables?

Maximize Yield Potential



2 questions to ask yourself...

What is the yield-limiting factor (YLF) on each acres of your land?

Is it profitable to eliminate the issue(s)?

- Lack of water is likely NOT your YLF on all your acres.



Achieving Optimum Stands and Uniform Emergence

Place seed accurately (depth and at target population)

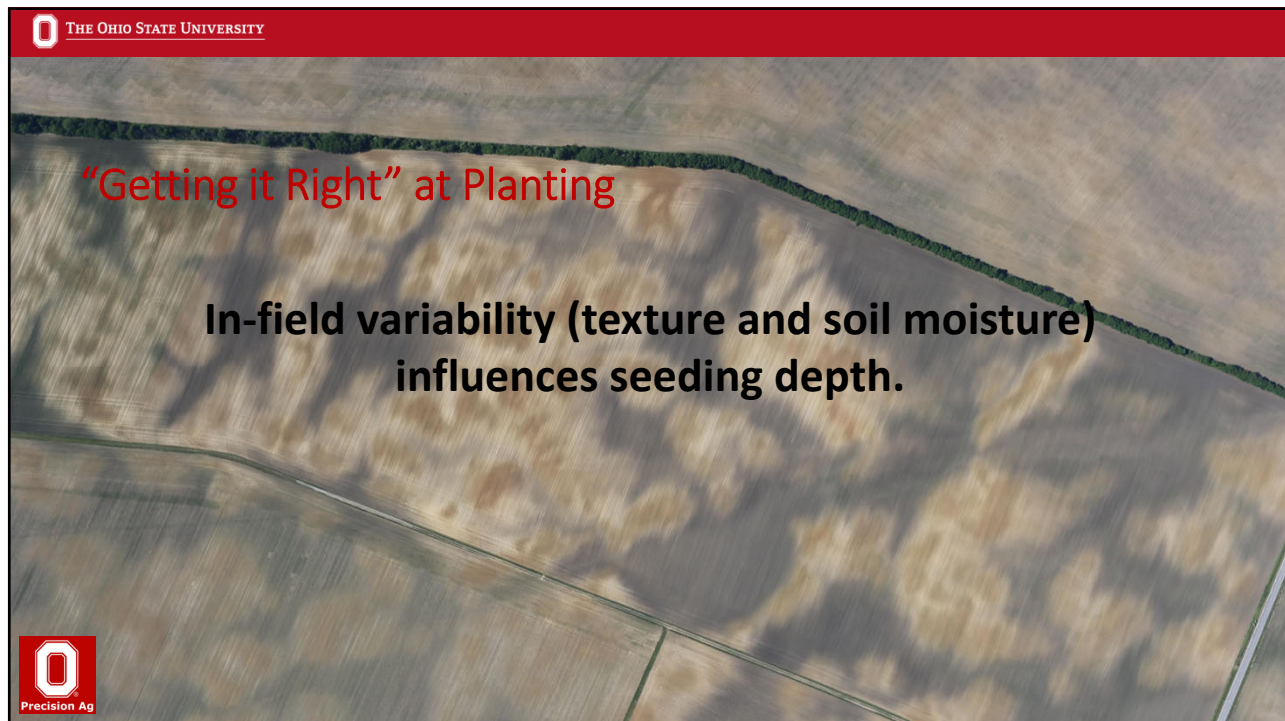
Soil Temperature (>50°F)

Soil Moisture (too wet = compaction, uneven emergence, disease)

Soil Texture (varies requiring varying DF)



Important to Yield





Welcome to Planter University

Reach out to the Ohio State
Digital Ag Team with Questions.

#PlanterU
#plant17

